

Pearmtree Hill Solar Farm

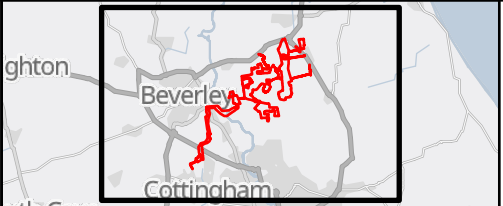
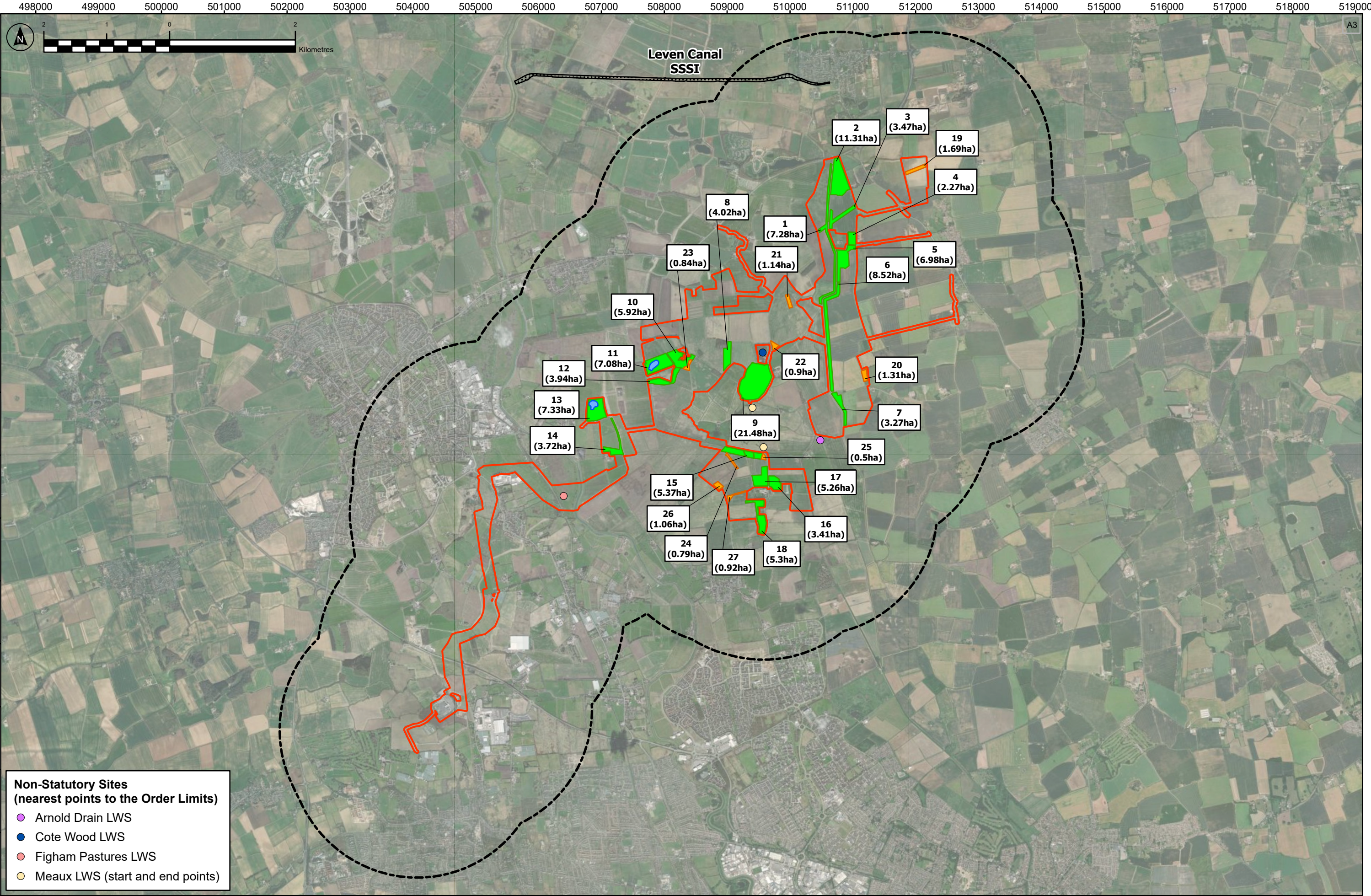
Environmental Statement

Volume 3

Figure 7.1: Designated Sites and Ecological Mitigation and Enhancement Areas

Application Document Ref: EN010157/APP/6.3
February 2025

Planning Act 2008
Infrastructure Planning
(Applications: Prescribed Forms
and Procedure) Regulations 2009 –
Regulation 5(2)(a)



Order Limits

2km buffer

Site of Special Scientific Interest (SSSI)

Bird Scrapes

Mitigation and Enhancement Areas

Ecological Enhancement Areas (less than 2 hectares)

Ecological Mitigation Areas (greater than or equal to 2 hectares)

The Base mapping is based upon Ordnance Survey (OS) data. Reproduced by permission of Ordnance Survey on behalf of HMSO. © Crown copyright and database right 2024. All rights reserved. Ordnance Survey licence number 0100631673

Notes

P01	22/01/2025	RTJ	RPH	LW	BT
Rev	Date	By	Chkd	Appd	Authd

Client

RWE

RSK

Designer

Project Name
Peartree Hill Solar Farm

Drawing Title
Environmental Statement
Volume 3, Figure 7.1:
Designated Sites and
Ecological Mitigation
and Enhancement
Areas

Scale at A3 1:55,000	Coordinate System: British National Grid
Status DCO Application	
PBS Number EN010157/APPI6.3	Rev P01

RWE Renewables UK Limited

Windmill Hill Business Park,
Whitehill Way,
Swindon,
Wiltshire,
England,
SN5 6PB
www.rwe.com